

May 4, 2020

**BOARD OF COUNTY COMMISSIONERS
PRESS RELEASE**

For Immediate Release:

The public hearing for the South Suburban Sanitary District applications to apply recycled water (Class B or C) onto the land zoned EFU has been postponed until June 17, 2020 for the property off of North Poe Valley Road and June 23, 2020 for the properties off of Reeder Road.

"The decision to postpone these meetings was not easy. The Klamath County Board of Commissioners take great pride in the efficiencies in which the County is able to give landowners and developers decisions on land development applications. Klamath County is and remains a development friendly community. Although the County has been efficient in making land use decisions, it has never diminished the value of public input," said Commissioner DeGroot.

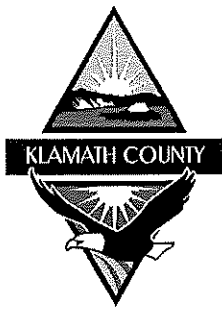
With the Coronavirus, the Commissioners are forced to decide between a procedure that is efficient in rendering a decision, but with limited opportunities for public input, or a procedure that allowed for the maximum public input opportunities, but slows the rendering of the decision. The Commissioners decided to choose the path to allow for the maximum opportunities for public input, which includes a public hearing.

"It is the hope of the Commissioners, that by June, the restriction on the size of gatherings will be lifted and that everyone who wishes to testify in person can do so. If the restrictions on the size of gathering are still in place, the Commissioners will be again forced to decide on a different path," said Commissioner Kelley Minty Morris.

"As a reminder, this is a proposal of the South Suburban Sanitary District, which is its own district and has its own elected board. The Board of County Commissioners and the Planning Commission are only able to weigh in on whether the proposal meets the specificity of the Planning Code and Oregon Land Use Laws. The Commissioners and the Planning Commission are not the creators of the proposal, nor able to weigh in with general support or lack of support for the plan," explained Commissioner Donnie Boyd.

For additional questions, please contact Erik Nobel, Klamath County Planning Director at 541-883-5121 Option 4.





KLAMATH COUNTY PLANNING DEPARTMENT
Government Center
305 Main St., Klamath Falls, Oregon 97601
Phone 541-883-5121 Option #4 Fax 541-885-3644

PUBLIC HEARING NOTICE

The Klamath County Planning Commission and Board of Commissioners will conduct a public hearing on Wednesday, June 17, 2020 at 6:00 p.m. at the Klamath County Fairgrounds in the John Hancock Arena. Any adjacent property owner, or other interested party, is entitled to participate in the hearing process. If you are unable to attend the hearing, you may submit written comments to the record. All written comments must be received in the Planning Dept. office by 5:00 p.m. the day prior to the scheduled hearing if you want them to be copied and distributed to the Commissioners. Oral testimony will be accepted at the public hearing.

APPLICANT: South Suburban Sanitary District – Site #2 **FILE NO.** Type II 7-20

REQUEST: Approval to allow the irrigation of approximately 750 acres of agricultural land with Class C to Class B Recycled Water for the production of fodder crops such as alfalfa, grass hay or pasture; the construction of a 88 acre storage reservoir for the Recycled Water; the construction of a 11 mile, 18-inch pipeline to carry recycled water from the treatment facility to the reservoir and associated treatment facility upgrades.

GENERAL LOCATION: The subject property is located on the south side of North Poe Valley Road, approximately ¼ mile east of the intersection of North Poe Valley Road and HWY 140 E.

MAP DESCRIPTION: Map: R-3910-12 Tax Lot: 1300, 1200; 1100, Map: R-3911-V1800 Tax Lot 101, 500; Map: R-3911-V19 Tax Lot: 300, 200, 100; Map R-3910-01300 Tax Lot 100; Map R-3911-V2000 Tax Lot 600.

REVIEW CRITERIA: Articles 22, 41, 54, 57, & 75 of the Klamath County Land Development Code.

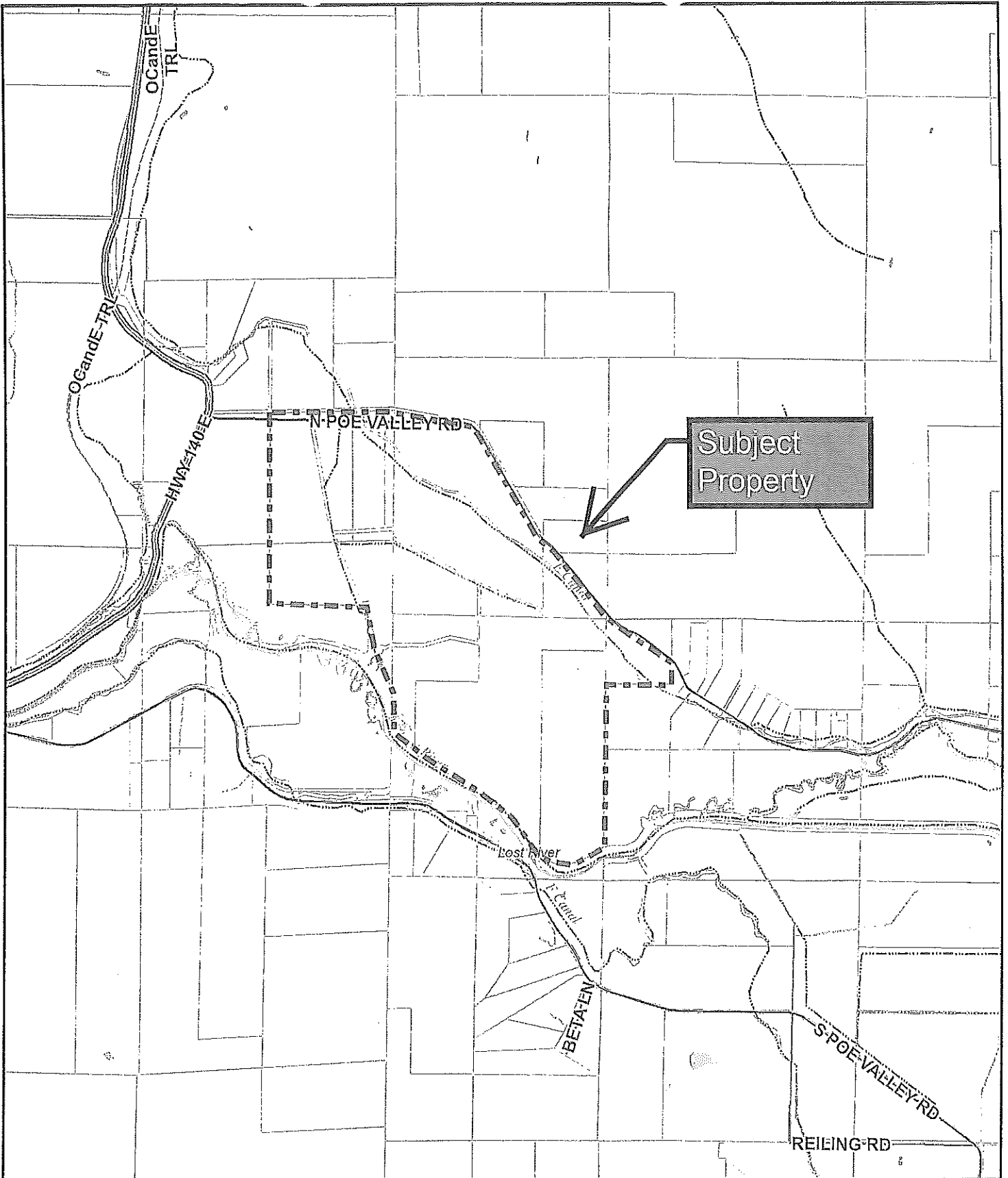
ZONE DESIGNATION: Exclusive Farm Use – Crops / Grazing (EFU-CG)

SEND COMMENTS TO: **Erik Nobel, Planning Director**
305 Main St.
Klamath Falls, OR 97601
ENobel@KlamathCounty.org

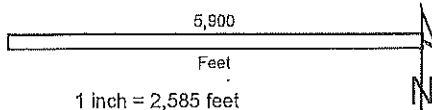
A copy of the application and all documents and evidence submitted by the applicant and the applicable criteria are available for inspection at no cost and can be copied at reasonable cost at the Klamath County Planning Dept. A copy of the staff report will be available for inspection at no cost at least seven days prior to the hearing and can be provided at a cost of \$0.25 per page (postage additional). **Additional information is available by contacting Erik Nobel (Phone: 541-851-3648).**

If you are a mortgagee, lien holder, vendor or seller, ORS Chapter 215 requires that you promptly forward this notice to the purchaser. If you are the deed holder and do not live on the property, please notify the occupant of this action. If you are coming to the hearing from out of town, we suggest you phone us ahead of time as hearing dates and times are subject to change (541-883-5121 Ext.*3083). You must notify the Planning Division in writing prior to the scheduled hearing date if you wish to be notified of any continuances.

Persons needing materials in alternate format or communication access, such as a sign interpreter, may contact this office at 305 Main Street, Klamath Falls, OR 97601, telephone 883-5121 at least 48 hours in advance of the scheduled meeting.

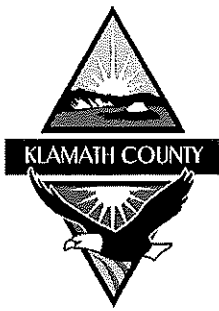


Klamath County



Date Printed: _____

This map is for planning purposes only. This map has been prepared for internal use by Klamath County only. Accuracy and completeness is not guaranteed to any other agency, public or private.



KLAMATH COUNTY PLANNING DEPARTMENT
Government Center
305 Main St., Klamath Falls, Oregon 97601
Phone 541-883-5121 Option #4 Fax 541-885-3644

PUBLIC HEARING NOTICE

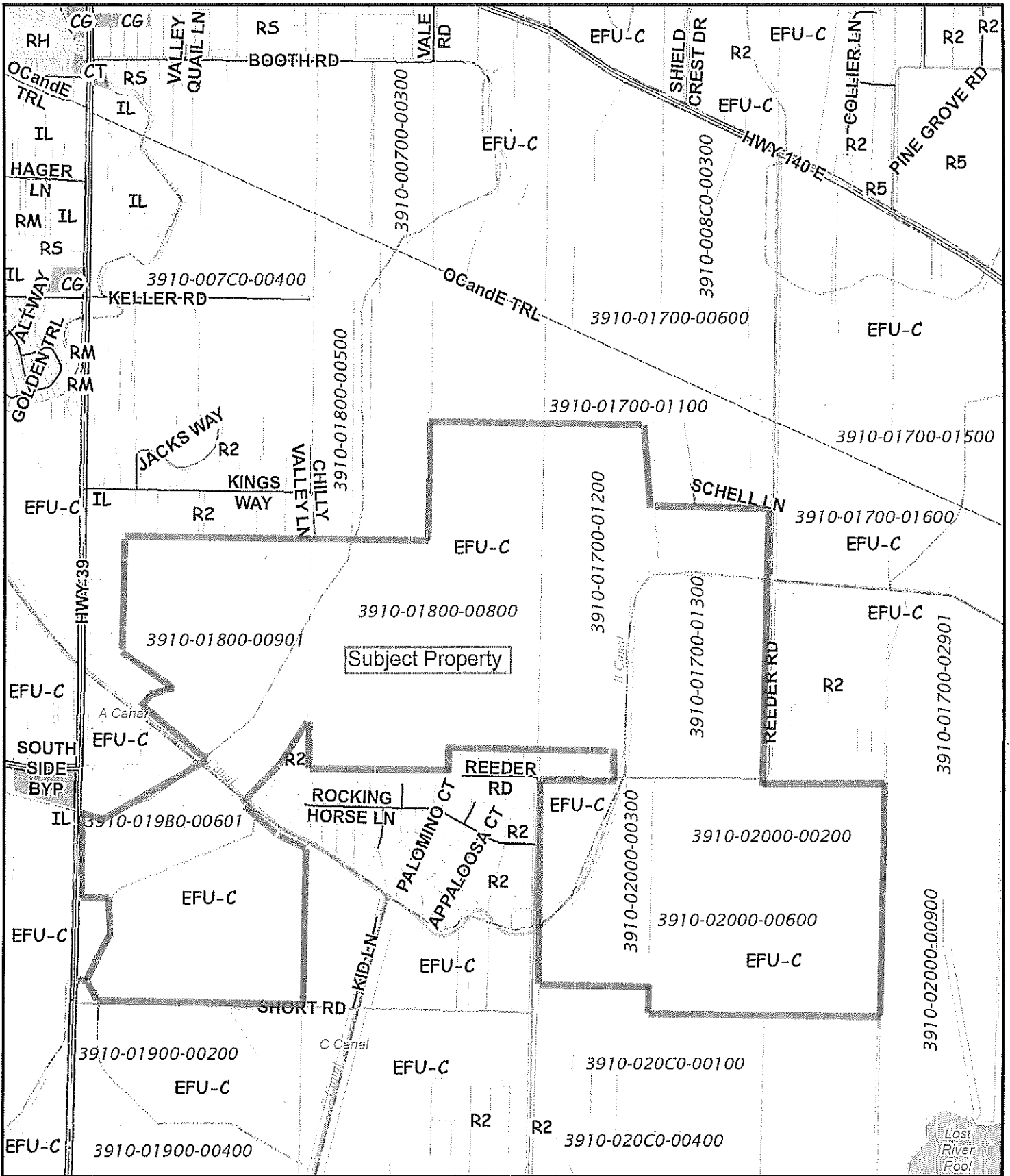
The Klamath County Planning Commission and Board of Commissioners will conduct a public hearing on Tuesday, June 23, 2020 at 6:00 p.m. at the Klamath County Fairgrounds in the John Hancock Arena. Any adjacent property owner, or other interested party, is entitled to participate in the hearing process. If you are unable to attend the hearing, you may submit written comments to the record. All written comments must be received in the Planning Dept. office by 5:00 p.m. the day prior to the scheduled hearing if you want them to be copied and distributed to the Commissioners. Oral testimony will be accepted at the public hearing.

- APPLICANT:** South Suburban Sanitary District – Site #1 **FILE NO.** Type II 2-20
- REQUEST:** Approval to allow the irrigation of approximately 550 acres of agricultural land with Class C to Class B Recycled Water for the production of fodder crops such as alfalfa, grass hay or pasture; the construction of a 95 acre storage reservoir for Class C to Class B Recycled Water; the construction of a 6 mile, 18-inch pipeline to carry recycled water from the treatment facility to the reservoir and associated treatment facility upgrades.
- GENERAL LOCATION:** The subject properties for the irrigation are generally found east of Hwy 39, North of Short Road, East and West of Reeder Road and South of the OC&E Trail. The reservoir is located South of OC&E Trail and West of Reeder Road. The pipeline will primarily follow the OC&E trail from the treatment facility to the proposed storage reservoir.
- MAP DESCRIPTION:** Map – R-3910-01700 Tax Lot(s): 01300, 01200; Map: R-3910-01800 Tax Lot(s): 00901; 00800; Map – R 3910-02000 Tax Lot(s) 00300, 00200, 00600; Map: R-3910-019B0 Tax lot(s): 00601
- REVIEW CRITERIA:** Articles 22, 41, 54 & 75 of the Klamath County Land Development Code.
- ZONE DESIGNATION:** Exclusive Farm Use – Crops (EFU-C)
- SEND COMMENTS TO:** Erik Nobel, Planning Director
305 Main St.
Klamath Falls, OR 97601
ENobel@KlamathCounty.org

A copy of the application and all documents and evidence submitted by the applicant and the applicable criteria are available for inspection at no cost and can be copied at reasonable cost at the Klamath County Planning Dept. A copy of the staff report will be available for inspection at no cost at least seven days prior to the hearing and can be provided at a cost of \$0.25 per page (postage additional). **Additional information is available by contacting Erik Nobel (Phone: 541-851-3648).**

If you are a mortgagee, lien holder, vendor or seller, ORS Chapter 215 requires that you promptly forward this notice to the purchaser. If you are the deed holder and do not live on the property, please notify the occupant of this action. If you are coming to the hearing from out of town, we suggest you phone us ahead of time as hearing dates and times are subject to change (541-883-5121 Ext.*3083). You must notify the Planning Division in writing prior to the scheduled hearing date if you wish to be notified of any continuances.

Persons needing materials in alternate format or communication access, such as a sign interpreter, may contact this office at 305 Main Street, Klamath Falls, OR 97601, telephone 883-5121 at least 48 hours in advance of the scheduled meeting.



Klamath County

3,250
Feet

1 inch = 1,435 feet

Date Printed: _____

This map is for planning purposes only. This map has been prepared for internal use by Klamath County only. Accuracy and completeness is not guaranteed to any other agency, public or private.